

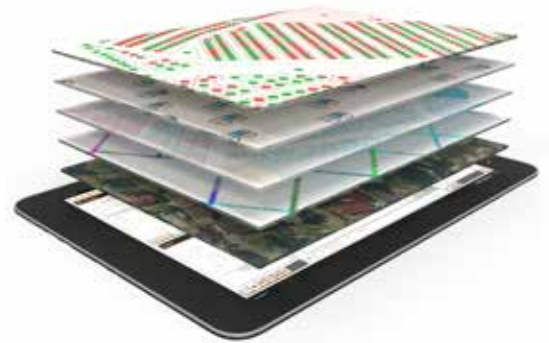
# MUNSOFT *Services*

## MUNSOFT SPATIAL

### INTRODUCTION

Practically everything that a municipality does relates in some way to a physical point on a map. A map is therefore the most effective business intelligence tool available to Local Government to enhance their operating capacity.

Munsoft Spatial is the culmination of three decades of work and experience, and it is without equal in its ability to transform the way in which local government in South African consumes and integrates data, and the way in which financial and management data is used for effective oversight and support.



### MUNSOFT SPATIAL: MODULE

Munsoft Spatial focusses on ensuring a reliable and complete Registered Property Dataset for the municipality. This forms the basis of revenue completeness and enhancement audits and is foundational for all other business intelligence analysis done on municipal operational or financial data.

#### FEATURE 1: ONLINE ACCESS

All staff and authorised contractors of the municipality receive a login account to the Munsoft Spatial, allowing for access to the information they need to do their jobs effectively. The data is stored on the central servers, which means that multiple users can collaborate on the same data simultaneously with no risk of data getting out of sync.



#### FEATURE 2: PROPERTY BOUNDRIES

The latest surveyed land parcel data is obtained from the Surveyor General's office on a quarterly basis, with plans already in place in some of the provinces to refresh the data every 24 hours.

Approval by the SG and the assignment of an SG21-key is the first step in the property lifecycle. The SG21-key can be equated to a person's ID number and is used

as the primary key throughout the property system. It is therefore critical that a comprehensive and up-to-date land parcel dataset is available to consultants deployed to assist municipalities.

The data is available for online viewing or download in a spreadsheet or spatial formats.

#### FEATURE 3: REGISTERED PROPERTIES LAYER

Registration with the deed's office follows Survey approval and causes the surveyed land parcel to become a legal entity. Once a property is registered, it becomes liable for rates and taxes. It is therefore critical for municipalities to have a reliable dataset of all registered properties.

Munsoft integrates with a leading title deeds vendor to update the legal status of each land parcel weekly.

Munsoft can also integrate with a municipality's title deeds data subscription to give the municipality online access to the latest full title deed information at any given time. This ensures that the municipality doesn't need to repurchase a deed dump every time the information is needed but can rather keep investing in keeping their central ownership database up to date and accessible to all departments and authorised contractors (such as the valuers) who need to access it.



#### FEATURE 4: STREET ADDRESSES

The Munsoft National Address Database is the most reliable address database available for South Africa, with over 13 million geocoded address points.

Provision is made for all South Africa's diverse addressing systems, including house numbers, stand numbers, and street numbers.

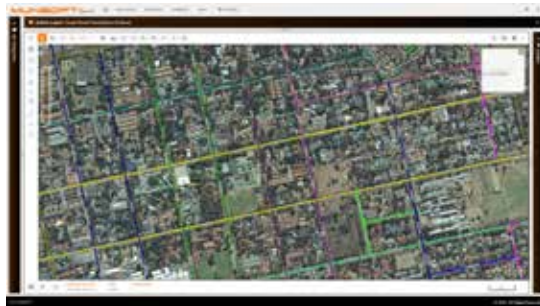
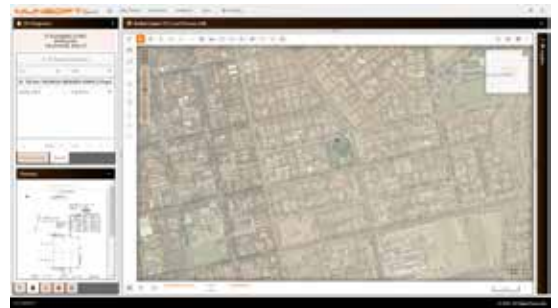
Street names are referenced to the official General Plans as well as to consumer databases to determine the so-called "in use" address and ensure optimal accuracy and consistency.

Validating the municipal addresses ensure that users can navigate effectively to a property and that bills get delivered without problems.

As part of the free offer, users will have online access to view and navigate by street addresses and road centrelines but will not be able to download the data.

or searching for the diagram. The diagrams are hosted on Munsoft's servers to ensure maximum uptime and reliability.

The built-in georeferencing feature lets users quickly do a heads-up georeferenced of a diagram to display it as a layer on the map. This gives users looking at the map easy access to the technical notes by simply viewing the map.



#### FEATURE 5: SURVEY DIAGRAM TOOL

It is critical to have access to the original survey documents when resolving conflicts and discrepancies between the SG cadastre, Deeds database, and municipal reports. The survey diagrams indicate the existence of subdivisions or consolidations.

With the Munsoft Survey Diagram integration, users can view and download all diagrams connected to a specific property by selecting the property on the map

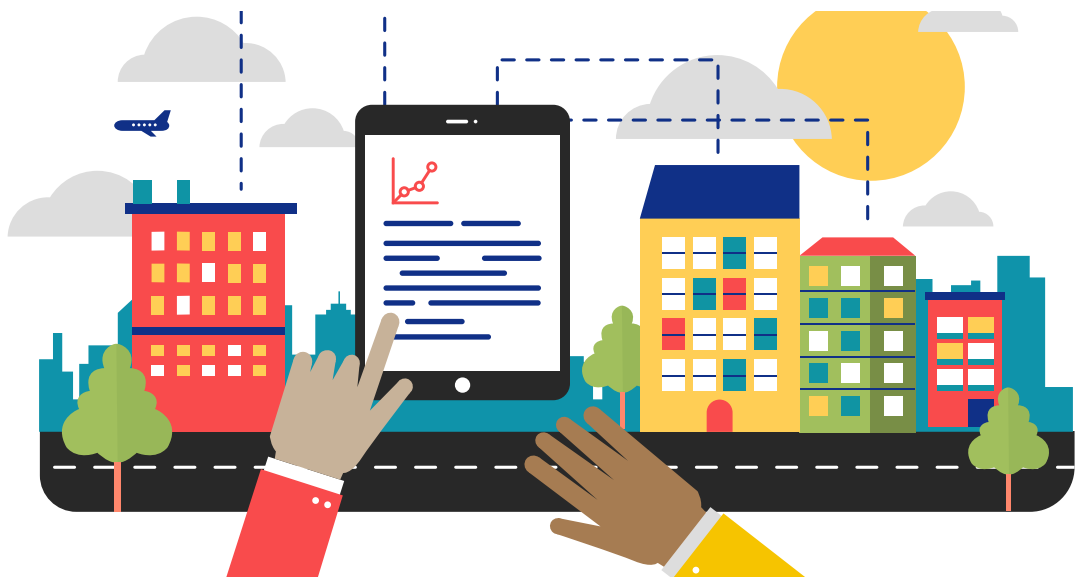
#### FEATURE 6: PROPERTY REGISTER AUDIT TOOL

Each municipality needs to maintain a reliable property register for a foundation for managing the properties and services within the municipality. Reliability depends on the following:

- The data must be CURRENT
- The data must be ACCURATE
- The data must be COMPLETE

Munsoft ensures the above by maintaining a dynamic link between the latest surveyed properties, title deeds, external valuation roll, and municipal financial properties file.

Any outliers, i.e. records that do not match all four of the above datasets, are identified, researched, and reported on to ensure a reliable registered property register.





## FEATURE 7: SERVICE COVERAGE MAP

The service coverage map shows an overview of all services linked to each property, allowing users to identify properties where services aren't being rendered, or (more likely) where services aren't being billed.



## FEATURE 8: METERED CONSUMPTION ANALYSIS

Consumption statistics (meter readings and prepaid purchases) are processed and linked to properties to help users to identify properties with faulty meters, or where the meters have been partially bypassed.

## DEBTORS MODULE

### FEATURE 9: AGE ANALYSIS MAPPING

By displaying the age analysis of debtors on the map, it is possible for managers to identify trends in non-payment for services, and report to councillors on the state of payment in their wards. It is also possible to coordinate debt actions to entire areas at a time, limiting the risk of community protests due to perceived unjustness or unfair treatment.



## CONCLUSION

Munsoft is the only solution that has been locally developed with multi-disciplinary experience in municipal governance as a foundation, a focus on efficiency and collaboration at its heart, and the success of our country as its vision.

We look forward to partnering with you, to the benefit of South Africa.

Munsoft Spatial is a key building block in your Enterprise Solution that will enable our clients to visualise complex municipal information and make more effective decisions for their institutions and communities.

# MUNSOFT

municipal financial software



011 215 8019



info@munsoft.co.za



www.munsoft.co.za



#### LIMPOPO OFFICE

Office 10  
90 Schoeman Street  
Polokwane Central  
Polokwane  
0700



#### GAUTENG OFFICE

Building 17, Cycad House  
Constantia Office Park  
Cnr 14th Avenue &  
Hendrik Potgieter Street  
Weltevredenpark  
Roodepoort 1709



#### KWAZULU-NATAL OFFICE

Regus Business Centre  
1st Floor  
Liberty Life Building  
21 Aurora Drive  
Umhlanga Ridge 4301



#### WESTERN CAPE OFFICE

Regus Business Centre  
Colosseum Building  
Foyer 3, 1st Floor  
Century Way  
Century City  
Cape Town 7441